

# 8 Doors Access Control Panel



iEDC (4 Doors)



ERIO \* ERIO Expansion Board Required for Controlling 5-8 Doors

## System Features

- Linux Operating System Applied for Higher System Performance and Stability
- Integrations with Video Surveillance, Alarm, Fire Alarm, BAS, BMS and Other Security Systems
- PoE (Power over Ethernet) Feature: Provides Ethernet Communication and Power Supply via Network Cable (CAT5)
- Embedded Apache Web Server \*
- Automatic System Reset via Self-Diagnosis (Watchdog Function)
- Data Transmission Using Encrypted Algorithm (3DES)
- Anti-Passback Function
- Arm/Disarm Function
- Duress Mode / 2 Men-Operation Function
- Guard Tour Function
- Advanced Security Time Schedule Configuration
- Configuration Setting per ID (Time Schedule, Card Usage Expiration Date, Accessible Reader, Door Opening Time, etc.)
- Event Priority Setting
- Alerts when Door Opening Time Exceeds and Forced Door Open
- Real-Time Monitoring of Access Door Status/User Access Status/Alarm Status using the Management Software
- Card Usage Expiration Date Setting
- Lost/Stolen Card Setting
- 4-Status Input Check (On/Off/Short/Cut)
- Designed to Withstand ESD (Electro Static Discharge) Shock
- Firmware Upgrade via Remote Control
- Supports Expansion Input Board (UIM16) / Expansion Output Board (UOM16)
- Compatible Software: STARWATCH ENTERPRISE, iDWATCH VIEW PRO

Model		iEDC
CPU		32 Bit (ARM9) Microprocessor
OS		Embedded Linux
Memory	Program	128M Byte SDRAM
	Data	128M Byte Flash Memory
User IDs		Up to 100,000 Users (Users and Event Buffer Definable)
Event Buffers		Up to 100,000 Events (Users and Event Buffer Definable)
Web Server		Embedded Apache Web Server (Controls up to 4 Doors when Operated via Web Browser)
Power / Current		DC12V / Max. 350mA *PoE (IEEE802, 3af compliant:12V/1A)
Reader Port		4 EA : 26/34 Bit Wiegand, 4/8 Bit Burst for PIN
Communication		RS232 / RS485 (Max. 255ch.) / Ethernet
Communication Speed	Serial	57,600 bps [Default] / 9,600 bps / 19,200 bps / 38,400 bps / 115,200 bps [Selectable]
	Ethernet	10/100 Mbps
Input Port		8 EA (Input Type Selectable)
Output Port		8 EA : 2 FORM-C Relay Output (COM, NO, NC) / DC 12V ~ 18V, Rating Max. 2A
Buzzer		Piezo Buzzer
LED Indicator		25 LED Indicators
Operating Temperature		0° ~ +65°C
Operating Humidity		10% ~90% Relative Humidity Non-Condensing
Dimension(W x H x T) /Weight		185 x 145 x 18mm / 221g
Certification		FCC, CE, KCC, RoHS, UL

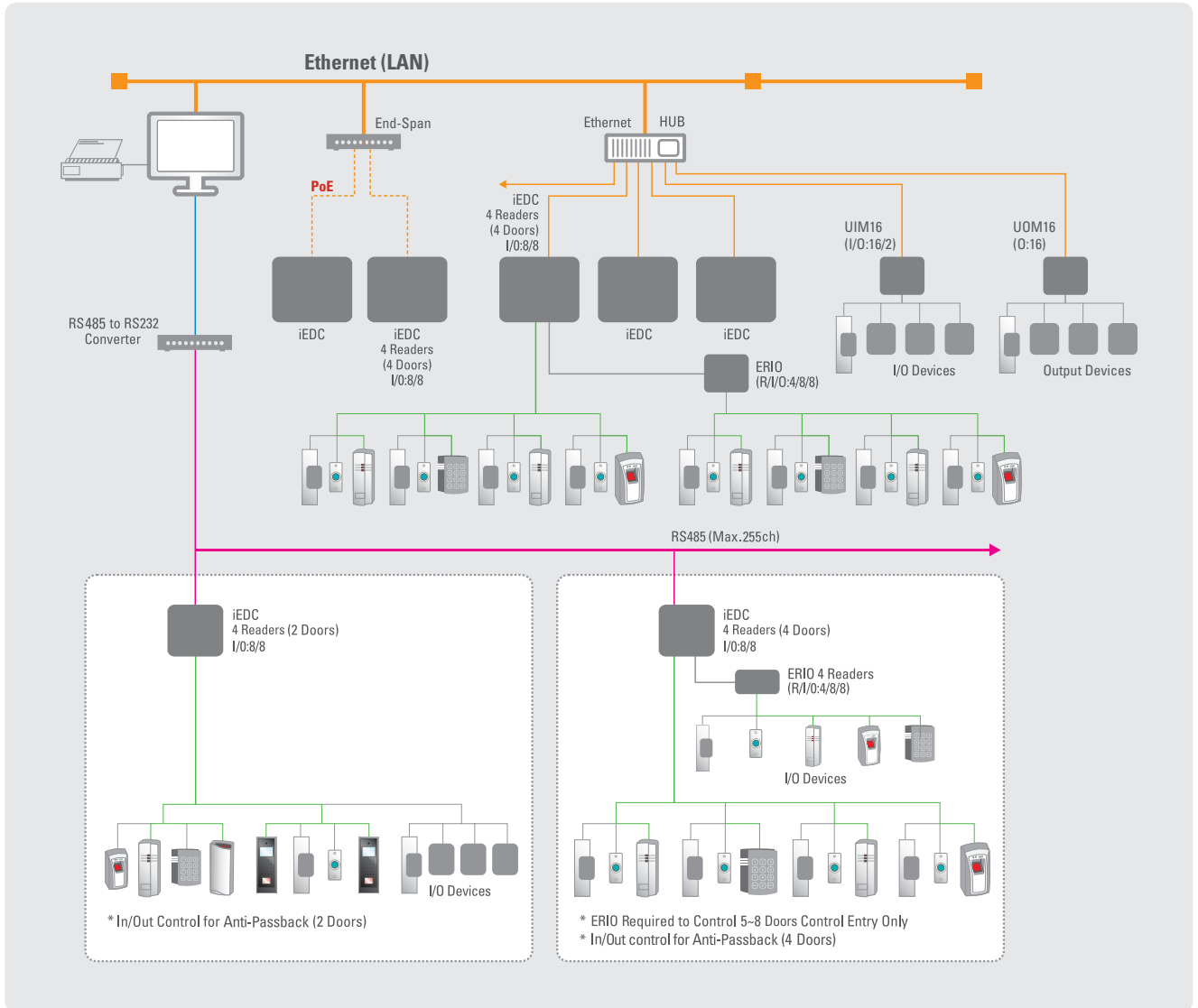
ERIO (Expansion Reader / Input / Output Board) / Required for Controlling 5-8 Doors		
Reader/Input/Output Port		
4 Reader Ports, 8 Input Ports, 8 Output Ports		
		UOM16 (Expansion Output Board)
CPU		8 Bit Microprocessor
Memory	Program	128K Byte Flash Memory
	Data	4K Byte SRAM
Input Port		16 EA
Output Port		2 EA
Communication		Ethernet (10/100 Mbps)
Power / Current		DC12V / Max. 300mA
		DC12V / Max. 500mA

Time Schedule			
Time Code	128	Holiday Code	128
Time Interval	24	Holiday	64

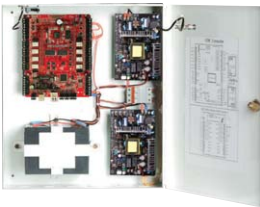
### \* Embedded Apache Web Server

- User Registration / Deletion / Search Function
- iEDC Network Information Setting (Ethernet / Serial Communication)
- iEDC Board ID Search Function
- Duress Mode Setting
- 2 Men-Operation Setting
- Card Auto Deletion Reader Setting
- Output Time Setting for Card Event
- Output Time Setting for Input Event
- Event Priority Setting
- Reader Mode Setting (Proximity Reader, PIN&Proximity Reader)
- Arm/Disarm Setting
- Time Schedule Setting

## iEDC Configuration

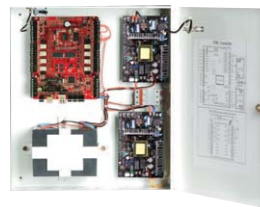


## iEDC Package



### iEDC Package - 1(4 Doors)

iEDC Board	1 EA
NEMA Case	1 EA
Power Supply (ID40WA)	2 EA
NFB Switch	1 EA
Back-up Battery (12V/4A)	2 EA



### iEDC Package - 2(8 Doors)

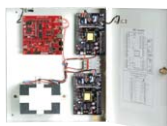
iEDC Board	1 EA
ERIO	1 EA
NEMA Case	1 EA
Power Supply (ID40WA)	2 EA
NFB Switch	1 EA
Back-up Battery (12V/4A)	2 EA



UIM16

### UIM16 / UOM16 Package

	UIM16	UOM16
Board	1 EA	1 EA
NEMA Case	1 EA	1 EA
Power Supply (ID40WA)	1 EA	2 EA
NFB Switch	1 EA	1 EA
Back-up Battery (12V)	1 EA (7A)	2 EA (4A)



UOM16



### Power Package for iEDC Package-2(8 Doors)

NEMA Case	1 EA
Power Supply (ID40WA)	2 EA
NFB Switch	1 EA
Back-up Battery (12V/4A)	2 EA